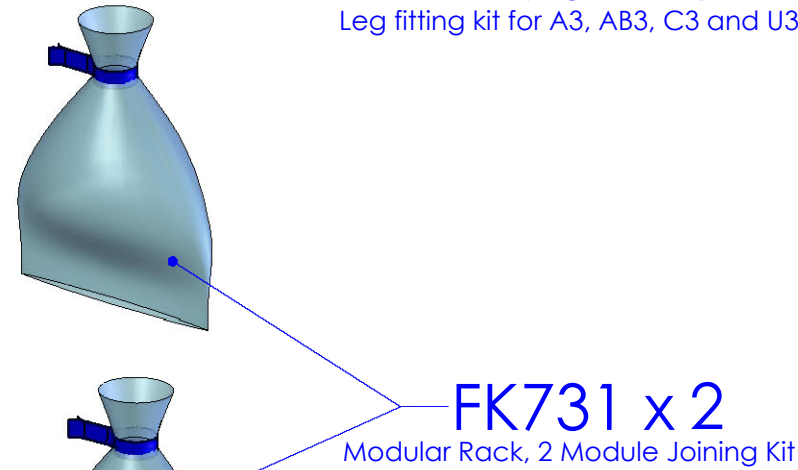
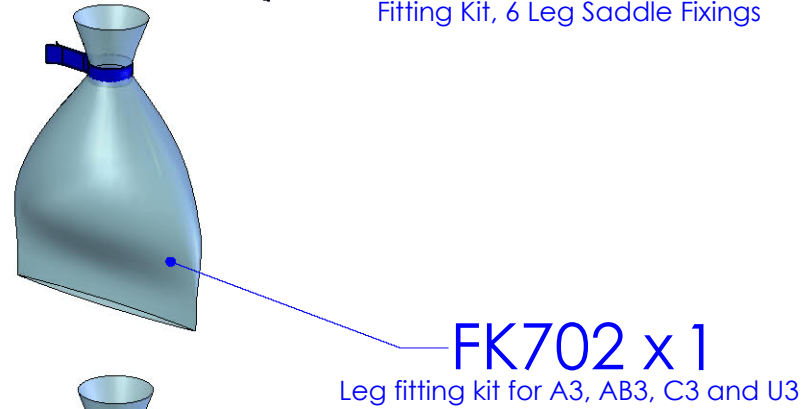
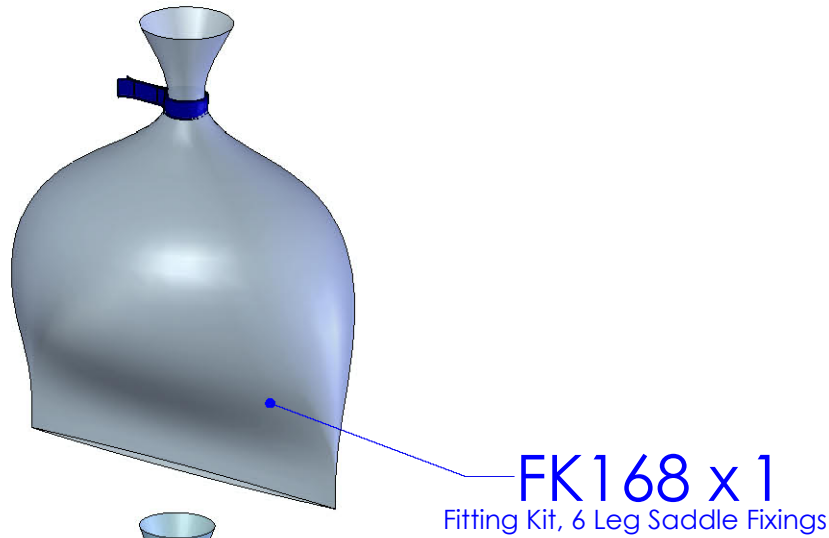
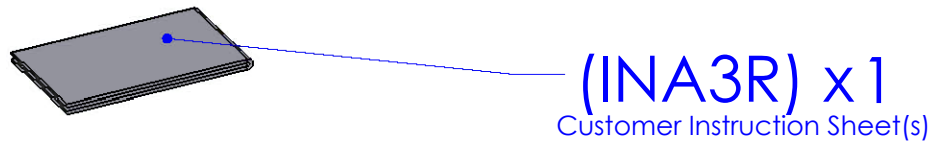
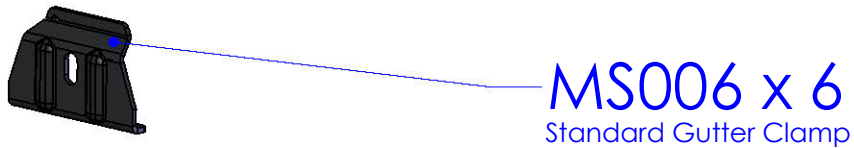
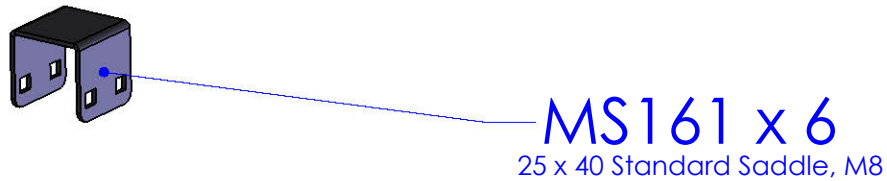
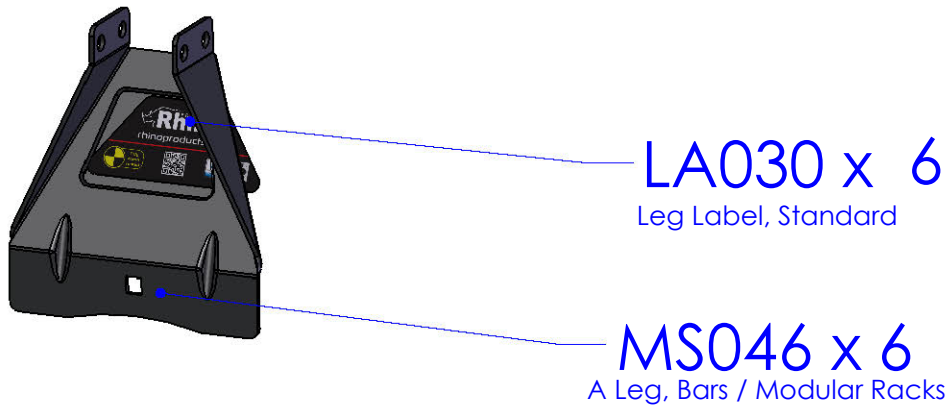
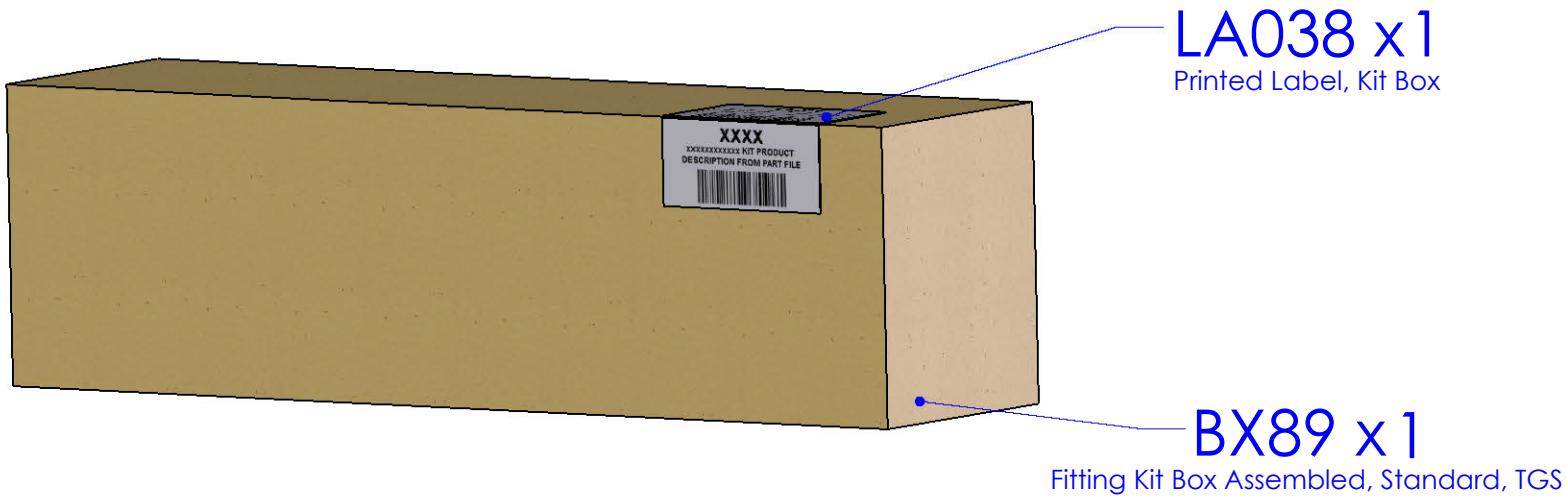


THIRD ANGLE PROJECTION

ISSUE:	CRF NO:	
f	0684	
	SIGNATURE:	DATE:
DRAWN:		
CHECK'D:		



- Notes: 1. Fit Labels to Legs as shown above.
2. Fold Printed Label along edge of Kit Box.
3. Put through heat tunnel.



DRAWING NO:	DESCRIPTION:		DESIGNED BY:
A3R (1 of 5)	"A" 6 Leg Fitting Kit, Modular Racks		K. Broadbent 12/12/06
MATERIAL SIZE:	MATERIAL SPEC:	FINISH:	WEIGHT:
n/a	n/a	n/a	5.47Kg

UNLESS OTHERWISE SPECIFIED:	
DIMENSIONS ARE IN MM	
0.00	+0.2
0.0	+0.5
ANG	±0.5°
DERIVED DIMENSIONS SHOWN IN BRACKETS	
DEBURR AND BREAK ALL SHARP EDGES	
SHEET SIZE A3	SHEET SCALE: 1:4

© NOTE: This drawing is the property of RHINO PRODUCTS Ltd and must not be used or copied without written consent. The RHINO PRODUCTS name and logo must remain clearly visible in any reproduction.

EU/R 523

53kg

+

xx kg

=

Max.
150kg

OLD SPRINTER/LT 1996-2006

SWB, LOW ROOF, TWIN DOORS

2350mm

3000mm

BR

13

NV

EU/R 531

54kg

+

xx kg

=

Max.
150kg

TRANSIT 2000-

MWB, MED ROOF, TWIN DOORS

2363mm

3300mm

5230mm

BR

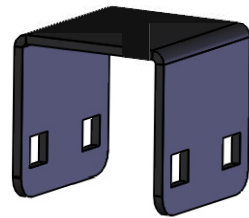
13

NV

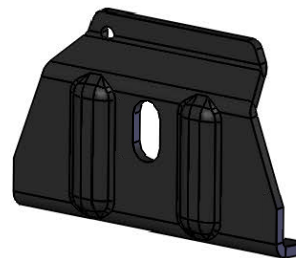
Manufactured by Rhino Products Ltd in the United Kingdom



MS046 x 6



MS161 x 6

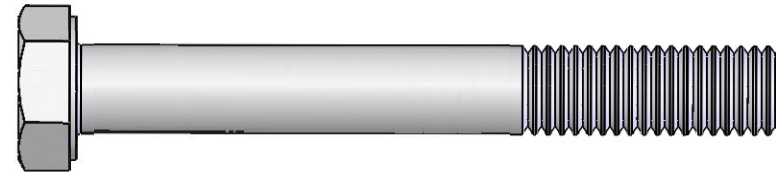


MS006 x 6

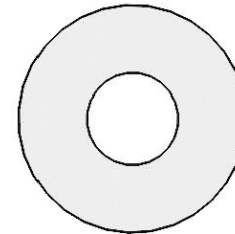


PS001-130 x 6

(1:1)



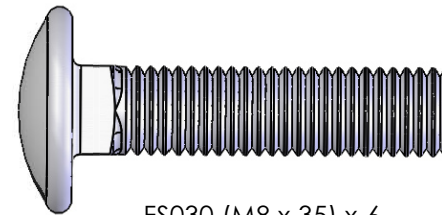
FB003 (M8 x 65) x 12



FW002 (M8) x 46



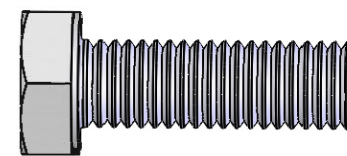
FN006 (M8) x 26



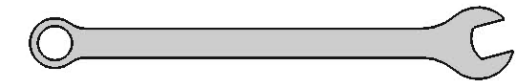
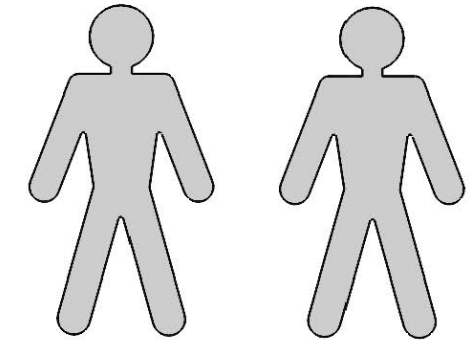
FS030 (M8 x 35) x 6



PS045 (M8) x 6



FS015 (M8 x 25) x 8



13mm x 2

