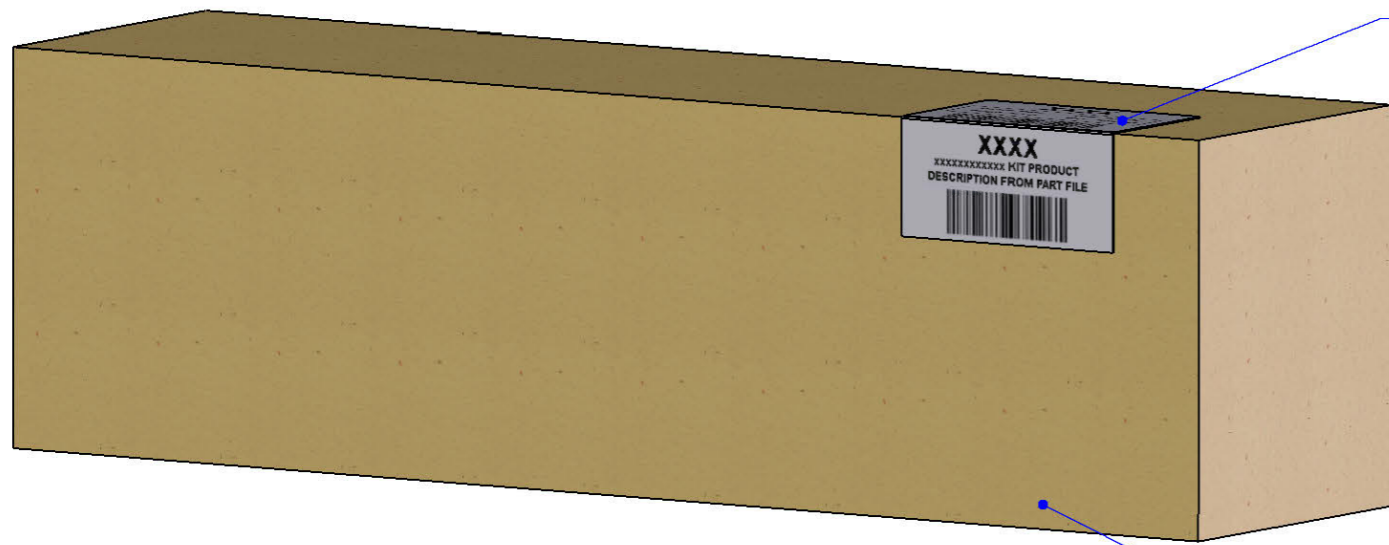


ISSUE:	CRF NO:	
e	0680	
	SIGNATURE:	DATE:
DRAWN:	M. Davies	25/10/12
CHECK'D:	K. Broadbent	25/10/12



LA038 x 1  
Printed Label, Kit Box



FK169 x 1  
Fitting Kit, 8 Legs Saddle Fixings



LA029 x 8  
Leg Label, Small

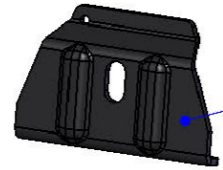
BX89 x 1  
Fitting Kit Box Assembled, Standard, TGS



MS166 x 8  
AB Leg, Bars / Modular Racks

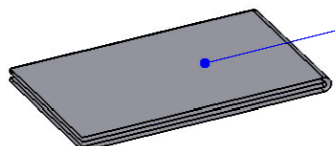


MS201 x 8  
Delta Bar Saddle, M8



MS006 x 8  
Standard Gutter Clamp

FK744 x 2  
Leg fitting kit for A2, A4, AB2, AB4, C2, and U2



(INAB4D) x 1  
Customer Instruction Sheet(s)

- Notes: 1. Fit Labels to Legs as shown above.  
 2. Fold Printed Label along edge of Kit Box.  
 3. Put through heat tunnel.

© NOTE: This drawing is the property of RHINO PRODUCTS Ltd and must not be used or copied without written consent. The RHINO PRODUCTS name and logo must remain clearly visible in any reproduction.

DRAWING NO: <b>AB4D (1 of 3)</b>	DESCRIPTION: <b>4 Bar "AB" Fitting Kit, Delta Bars</b>	DESIGNED BY: K. Broadbent 28/03/08
MATERIAL SIZE: n/a	MATERIAL SPEC: n/a	WEIGHT: 5.29Kg
	FINISH: n/a	

UNLESS OTHERWISE SPECIFIED: DIMENSIONS ARE IN MM	
0.00	+0.2
0.0	+0.5
ANG	±0.5 °
DERIVED DIMENSIONS SHOWN IN BRACKETS	
DEBURR AND BREAK ALL SHARP EDGES	
SHEET SIZE A3	SHEET SCALE: 1:3



MS166 x 8



MS201 x 8

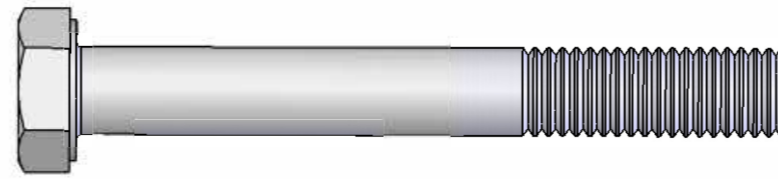


MS006 x 8

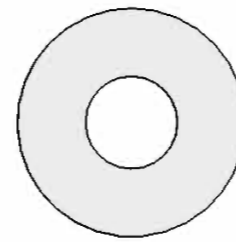


PS001-130 x 8

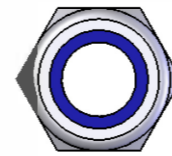
(1:1)



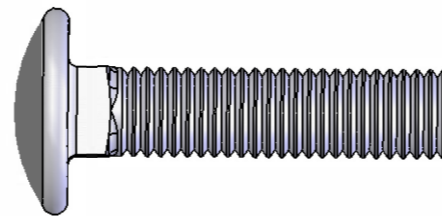
FB003 (M8 x 65) x 16



FW002 (M8) x 40



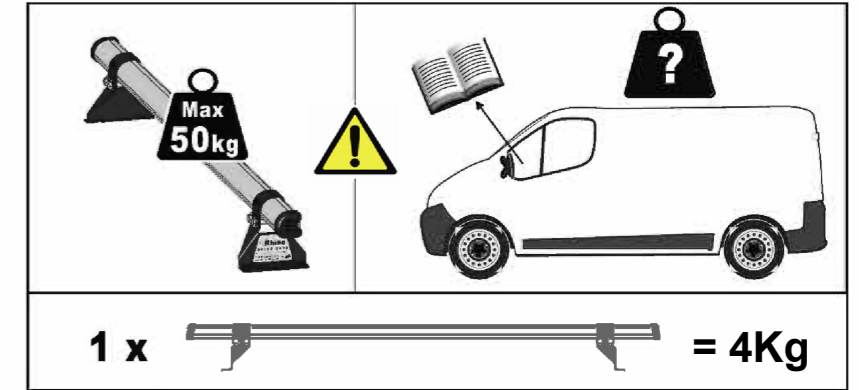
FN006 (M8) x 24



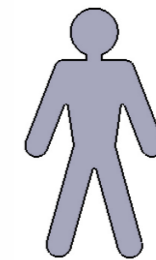
FS030 (M8 x 35) x 8



PS045 (M8) x 8



1 x  = 4Kg



13mm x 2

