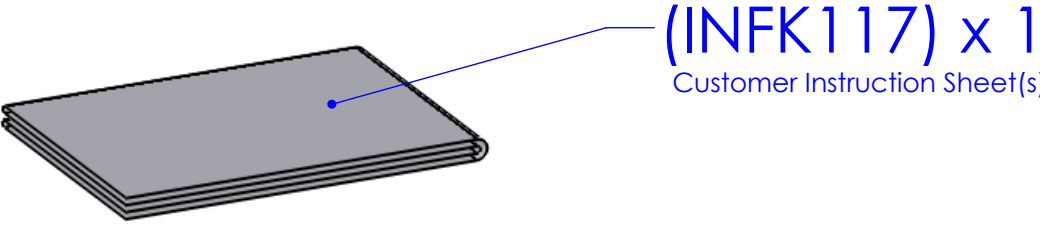
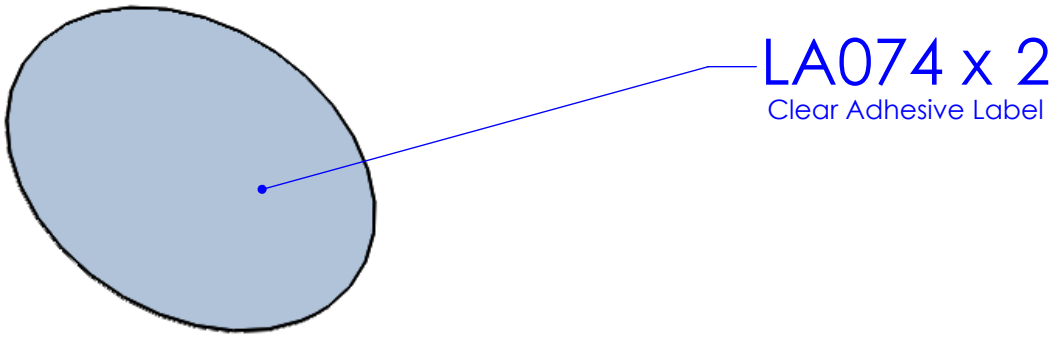
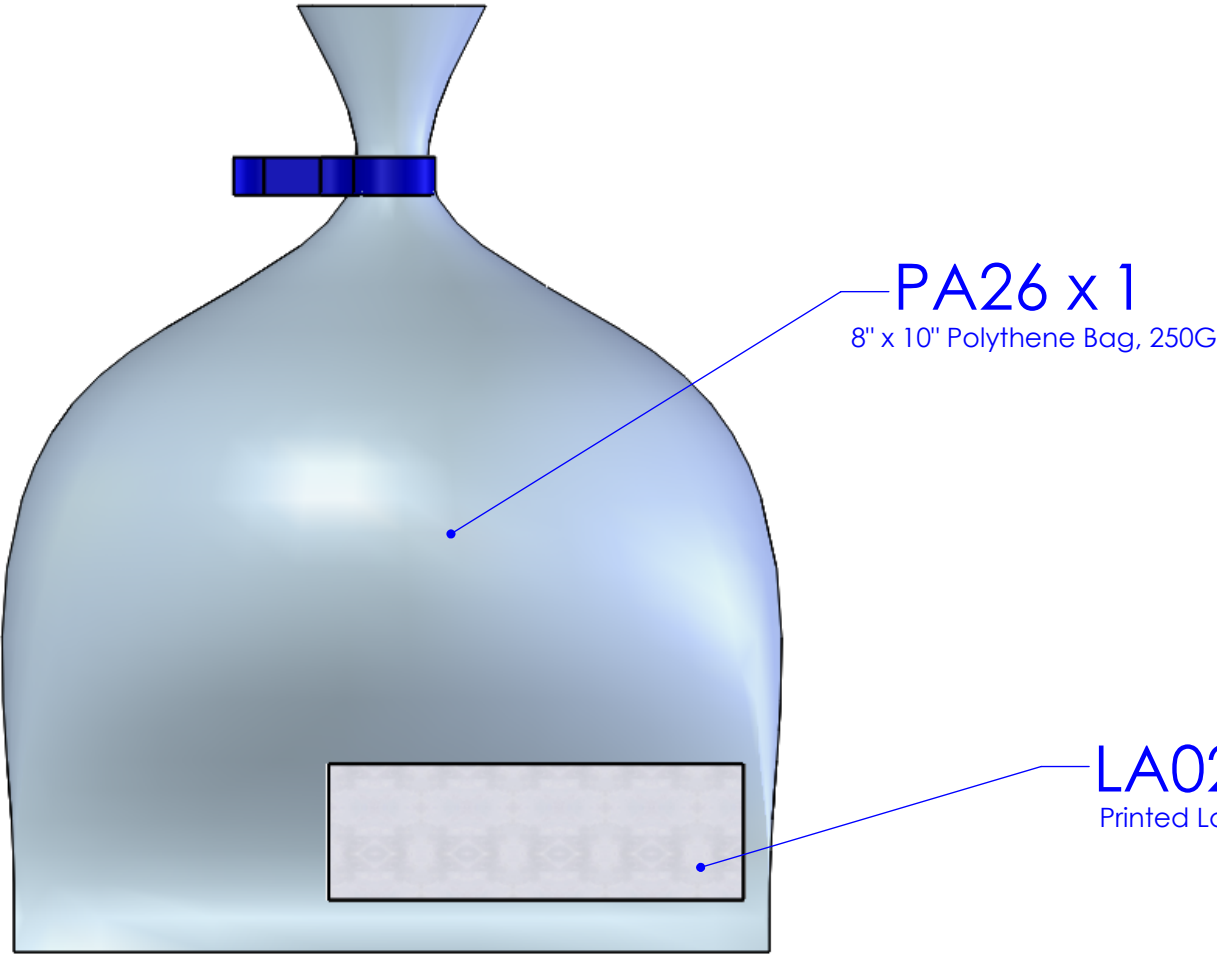
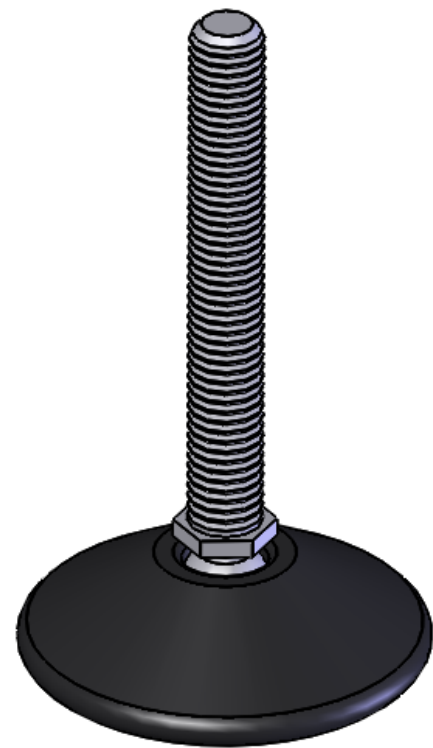
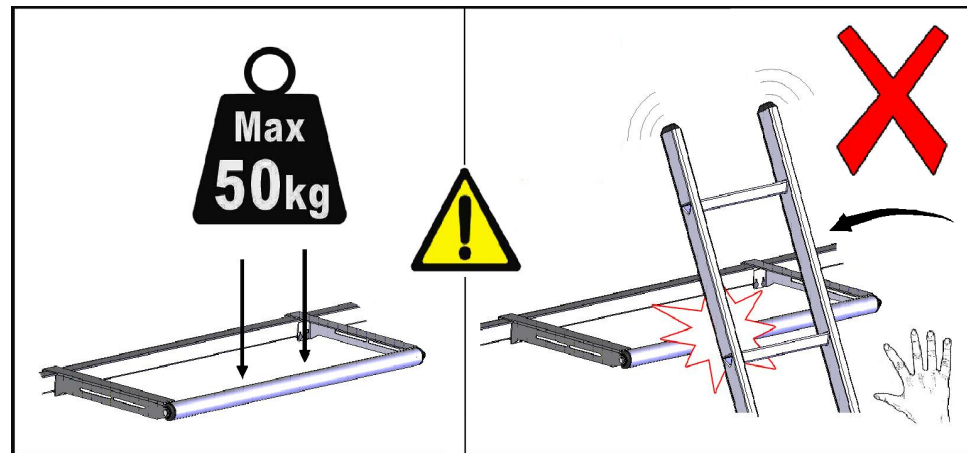


ISSUE:	DRAWN BY:	CHECKED BY:	CRF NO:	DATE:	DESCRIPTION:
f			0740		
g	JW	DG	0740	17/07/13	
h	CH	KB	1047	22/04/15	Roller axle changed to TP031
i	CH	KB	1130	11/09/15	FS015 changed to FS075 to improve fit

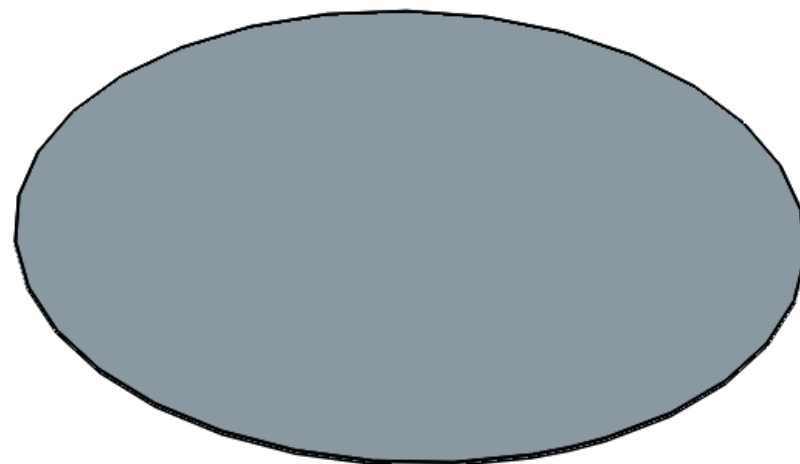


DRAWING NO: FK117 (1of3)	DESCRIPTION: Delta Bar Rear Roller Fitting Kit			DESIGNED BY: K. Broadbent 07/08/12
MATERIAL SIZE: n/a	MATERIAL SPEC: n/a	FINISH: n/a	WEIGHT: 0.35Kg	
© NOTE: This drawing is the property of Rhino Products Ltd and must not be used or copied without written consent. The Rhino Products name and logo must remain clearly visible in any reproduction.				

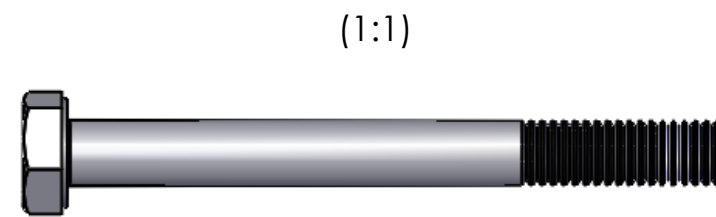
THIRD ANGLE PROJECTION	
UNLESS OTHERWISE SPECIFIED: DIMENSIONS ARE IN MM	
0.00	±0.2
0.0	±0.5
ANG	±0.5°
DERIVED DIMENSIONS SHOWN IN BRACKETS	
DEBURR AND BREAK ALL SHARP EDGES	
SHEET SIZE A3	SHEET SCALE: 1:2



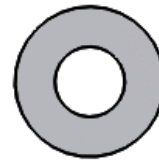
(PS135) x 2



LA074 x 2



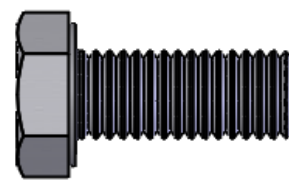
FB005 (M8) x 4



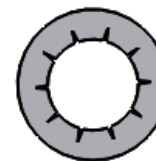
FW001 (M6) x 8



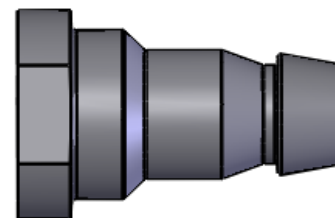
FN001 (M6) x 4



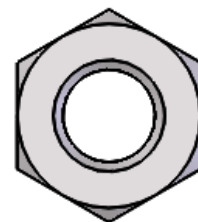
FS075 (M8 x 20) x 2



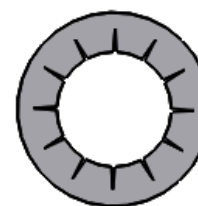
FW009 (M8) x 2



TP031 (M8) x 2



FN011 (M10) x 4



FW005 (M10) x 4

