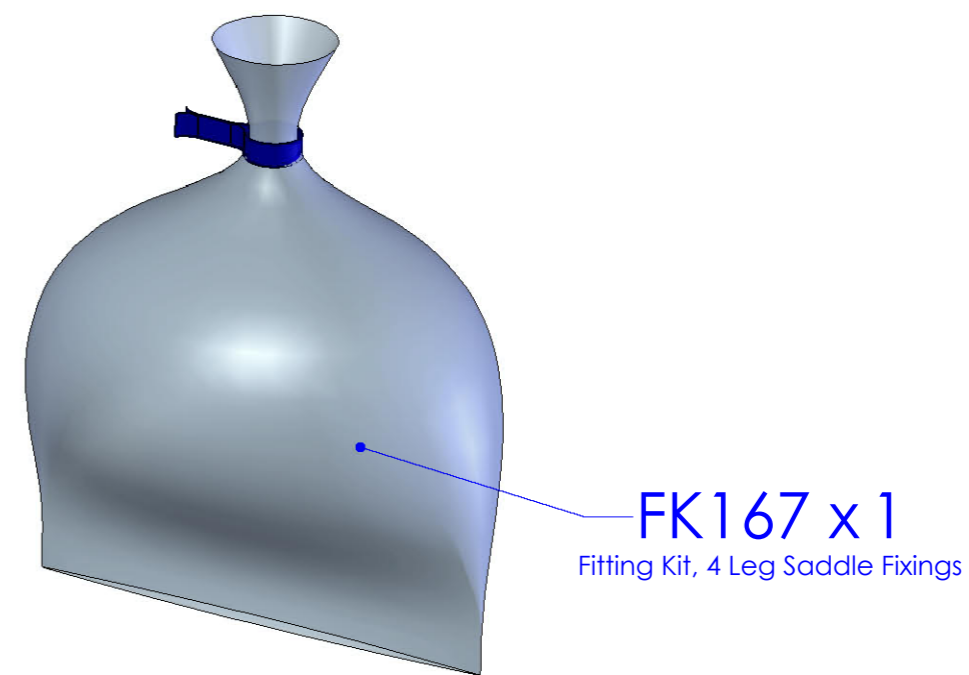
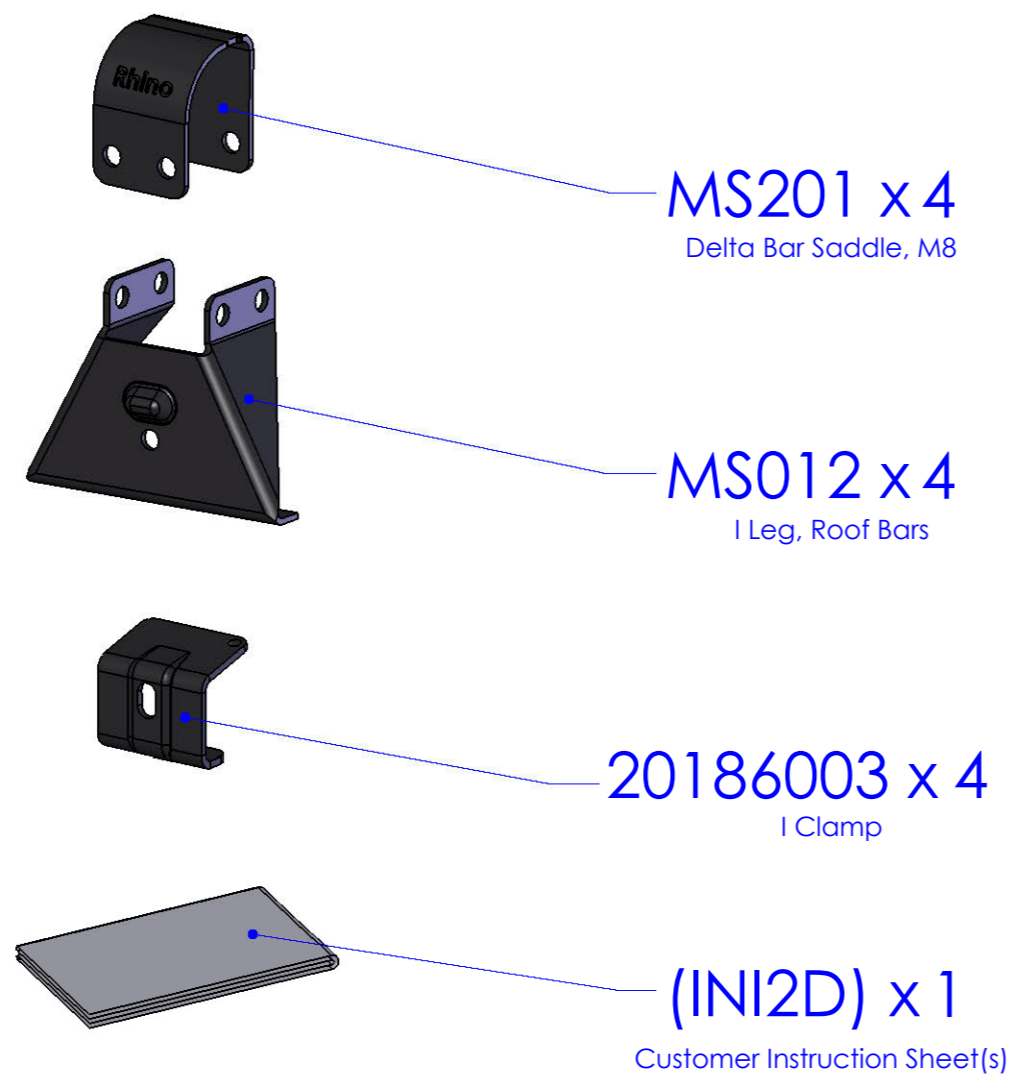
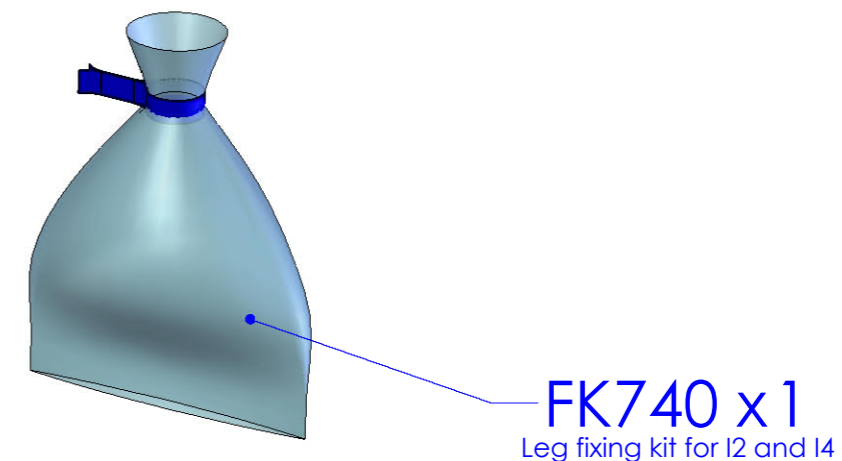
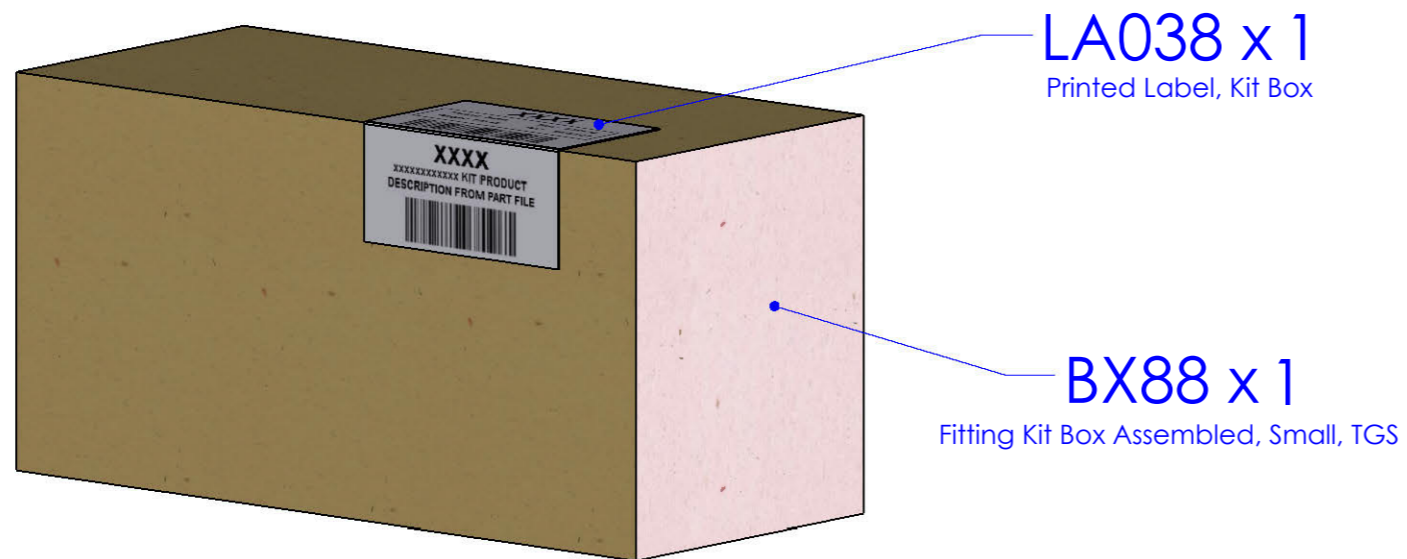


ISSUE:	CRF NO:	
C	0639	
	SIGNATURE:	DATE:
DRAWN:	<i>M. Davies</i>	30/08/12
CHECK'D:	<i>D. Spendlove</i>	30/08/12



Note: 1. Fold Printed Label along edge of Kit Box.
2. Put through heat tunnel.

© NOTE: This drawing is the property of RHINO PRODUCTS Ltd and must not be used or copied without written consent. The RHINO PRODUCTS name and logo must remain clearly visible in any reproduction.

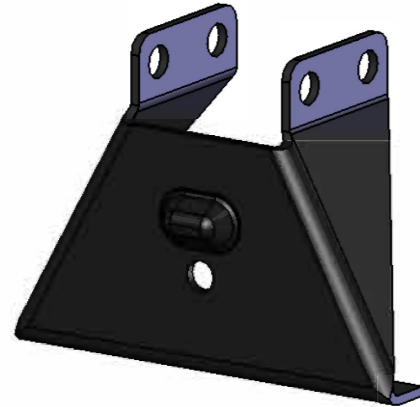


DRAWING NO: I2D (1 of 3)	DESCRIPTION: 2 Bar "I" Fitting Kit, Delta Bars		DESIGNED BY: K. Broadbent 18/04/08
MATERIAL SIZE: n/a	MATERIAL SPEC: n/a	FINISH: n/a	WEIGHT: 3.06Kg

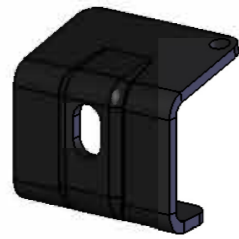
UNLESS OTHERWISE SPECIFIED: DIMENSIONS ARE IN MM	
0.00	+0.2
0.0	+0.5
ANG	±0.5°
DERIVED DIMENSIONS SHOWN IN BRACKETS	
DEBURR AND BREAK ALL SHARP EDGES	
SHEET SIZE A3	SHEET SCALE: 1:3



MS201 x 4



MS012 x 4



20186003 x 4

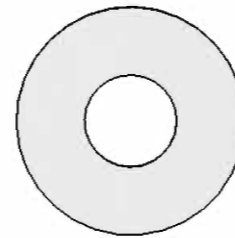


PS006-120 x 4

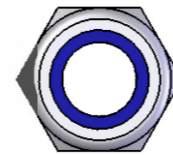
(1:1)



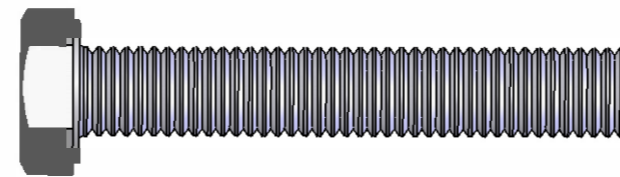
FB003 (M8 x 65) x 8



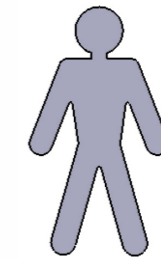
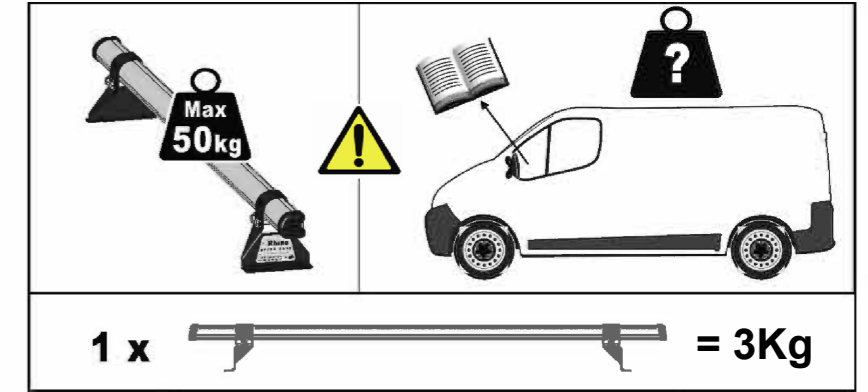
FW002 (M8) x 24



FN006 (M8) x 12



FS027 (M8 x 50) x 4



13mm x 2

