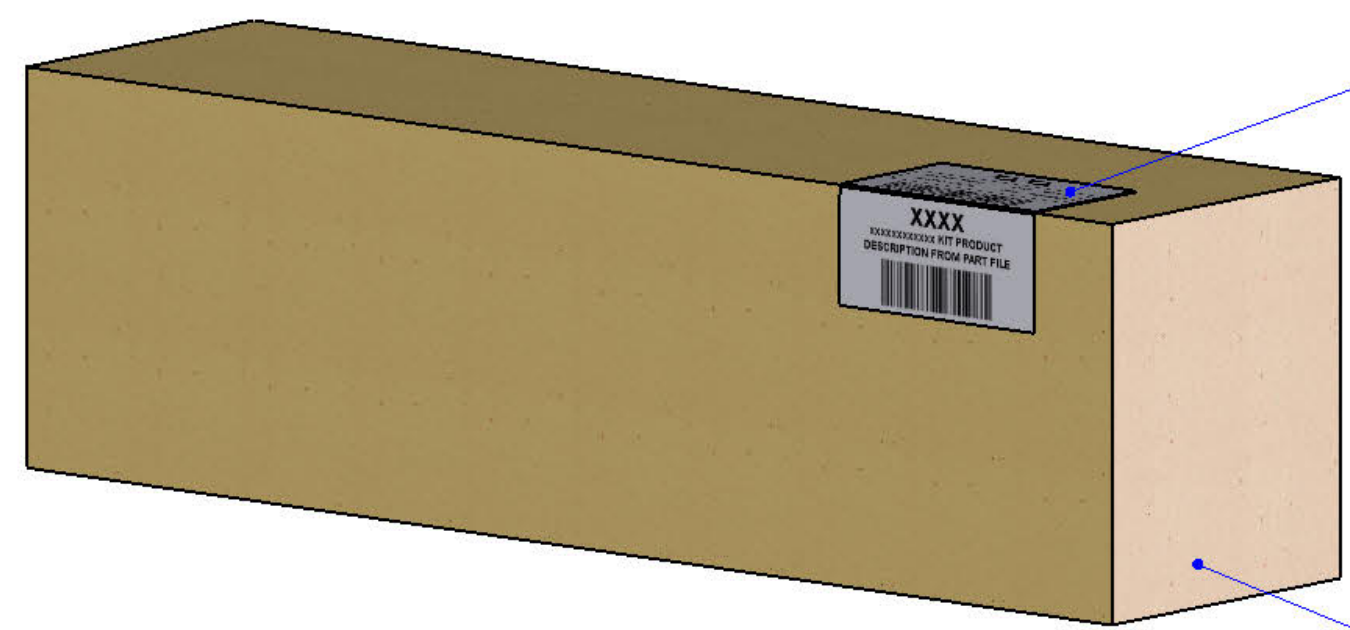


THIRD ANGLE PROJECTION

ISSUE:		CRF NO:	
d		0639	
SIGNATURE:		DATE:	
DRAWN: M. Davies		10/09/12	
CHECK'D: N. Broadbent		10/09/12	

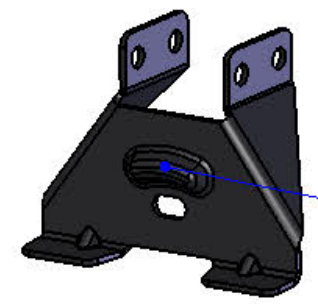


LA038 x1
Printed Label, Kit Box

BX89 x1
Fitting Kit Box Assembled, Standard, TGS



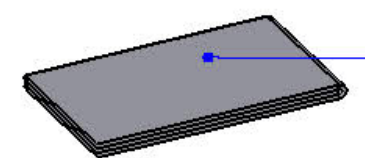
MS201 x 6
Delta Bar Saddle, M8



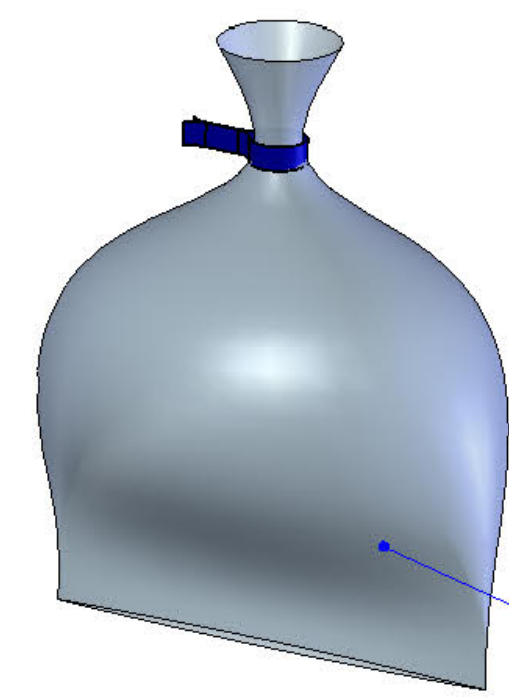
MS170 x 6
IA Leg, Bars / Modular Racks



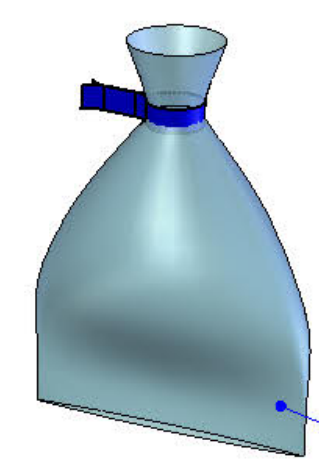
MS202 x 6
IA Clamp, Tooled



(INIA3D) x1
Customer Instruction Sheet(s)



FK168 x 1
Fitting Kit, 6 Leg Saddle Fixings



FK707 x 1
Leg fixing kit for IA3

Note: 1. Fold printed Label along edge of Kit Box.
2. Put through heat tunnel.

© NOTE: This drawing is the property of RHINO PRODUCTS Ltd and must not be used or copied without written consent. The RHINO PRODUCTS name and logo must remain clearly visible in any reproduction.

	DRAWING NO:	DESCRIPTION:	DESIGNED BY:
	IA3D (1 of 3)	3 Bar "IA" Fitting Kit, Delta Bars	D.Spendlove 20/12/06
	MATERIAL SIZE:	MATERIAL SPEC:	FINISH:
	n/a	n/a	n/a
			WEIGHT:
			4.20Kg

UNLESS OTHERWISE SPECIFIED:
DIMENSIONS ARE IN MM

0.00	0.2
0.0	0.5
ANG	0.5°

DERIVED DIMENSIONS SHOWN IN BRACKETS

DEBURR AND BREAK
ALL SHARP EDGES

SHEET SIZE A3	SHEET SCALE: 1:3
---------------	------------------



MS201 x 6



MS170 x 6



MS202 x 6

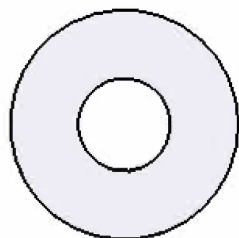


PS047 x 6

(1:1)



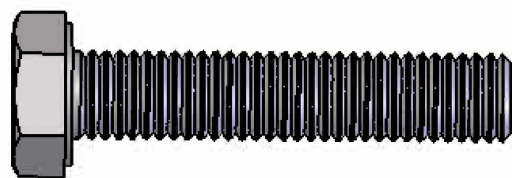
FB003 (M8 x 65) x 12



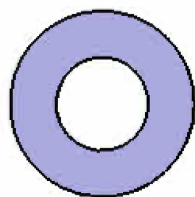
FW002 (M8) x 24



FN006 (M8) x 18



FS035 (M8 x 40) x 6



FW021 (M8) x 12



PS065 (M8) x 6

