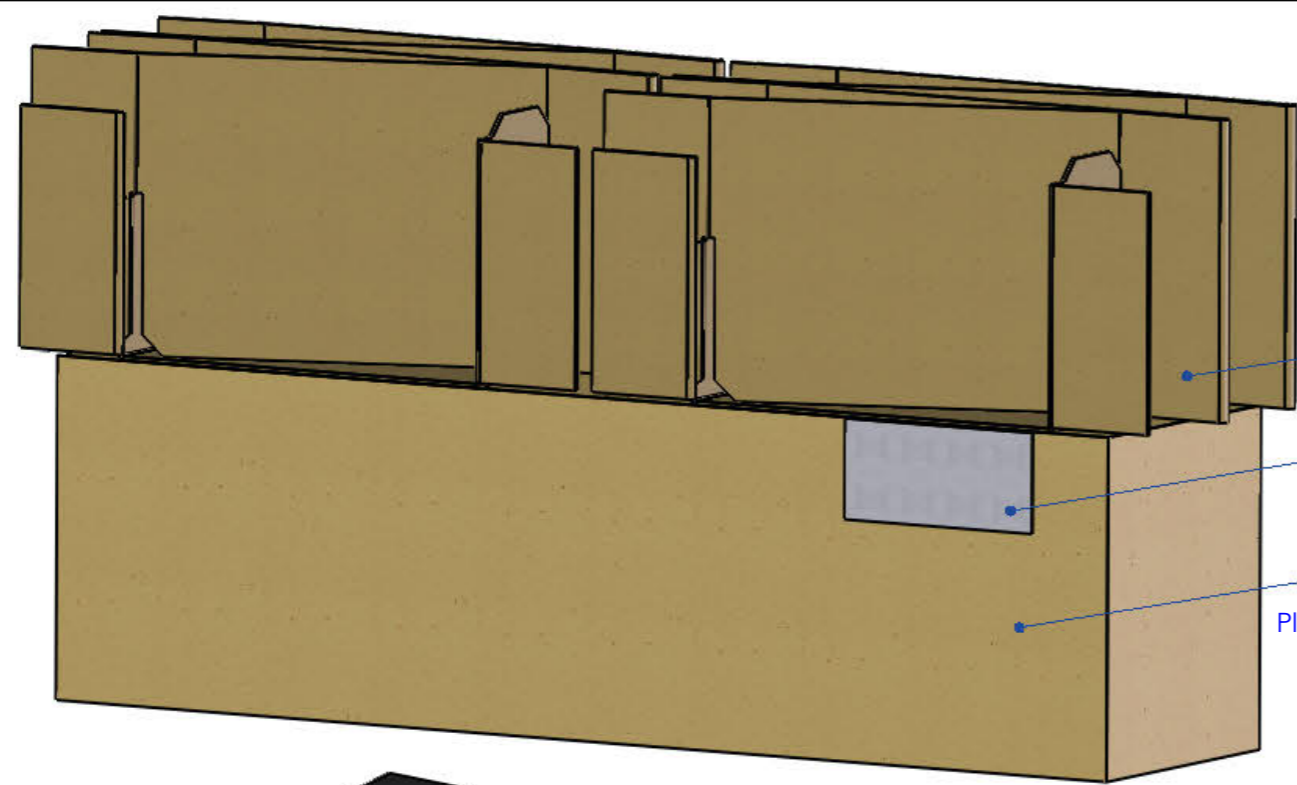


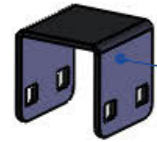
ISSUE:	DRAWN BY:	CHECKED BY:	CRF NO:	DATE:	DESCRIPTION:
a	CH	KB	1305	10/08/16	New Kit
b	JW	KB	1392	03/02/17	Removed tailgate and added R663 (L3) to instructions
c	JL	KB	1399	23/02/17	Instruction Image Change



PA03 x 2

LA038 x 1  
Printed Label, Kit Box

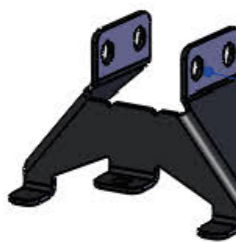
PA89 x 1  
Plain Cardboard Box, 560 x 140 x 160, TGS



MS161 x 6  
25 x 40 Standard Saddle, M8



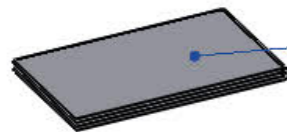
RPI001EU x 1  
Rhino Products Information Sheet



MS506 x 4  
JC - Outer Leg

LA029 x 4  
Leg Label, Small

MS507 x 2  
JC - Inner Leg



INJC3R x 1  
Customer Instruction Sheet(s)



FK168 x 1  
Fitting Kit, 6 Leg Saddle Fixings



FK902 x 1  
Leg fixing kit for JC3



FK731 x 2  
Modular Rack, 2 Module Joining Kit

- Notes:
1. Fit Labels to Legs as shown above.
  2. Fold Printed Label along edge of Kit Box.
  3. Put through heat tunnel.



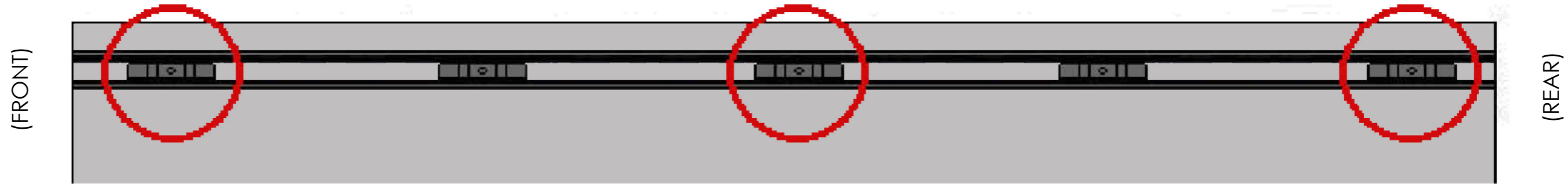
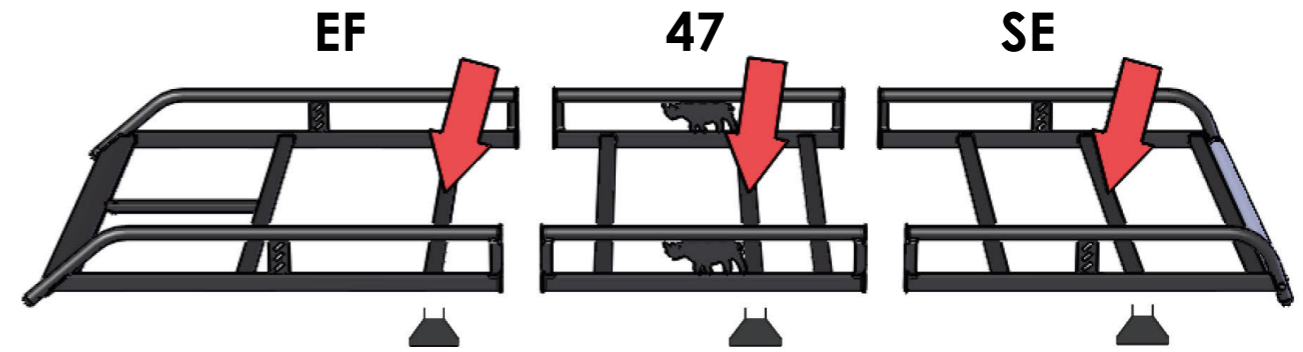
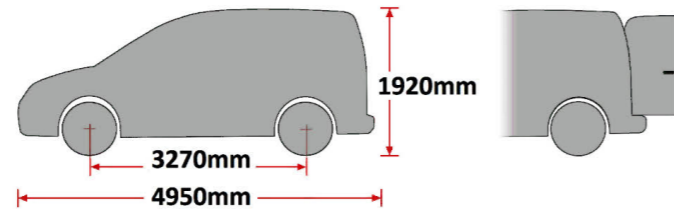
DRAWING NO: <b>JC3R (1 of 5)</b>	DESCRIPTION: <b>"JC" 6 Leg Fitting Kit, Modular Racks</b>	DESIGNED BY: C. Horsefield 10/08/16
MATERIAL SIZE: n/a	MATERIAL SPEC: n/a	WEIGHT: 4.01Kg
© NOTE: This drawing is the property of Rhino Products Ltd and must not be used or copied without written consent. The Rhino Products name and logo must remain clearly visible in any reproduction.		

 THIRD ANGLE PROJECTION	
UNLESS OTHERWISE SPECIFIED:	
DIMENSIONS ARE IN MM	
0.00	0.2
0.0	0.5
ANG	0.5°
DERIVED DIMENSIONS SHOWN IN BRACKETS	
DEBURR AND BREAK ALL SHARP EDGES	
SHEET SIZE A3	SHEET SCALE: 2:7

# EU/R 661



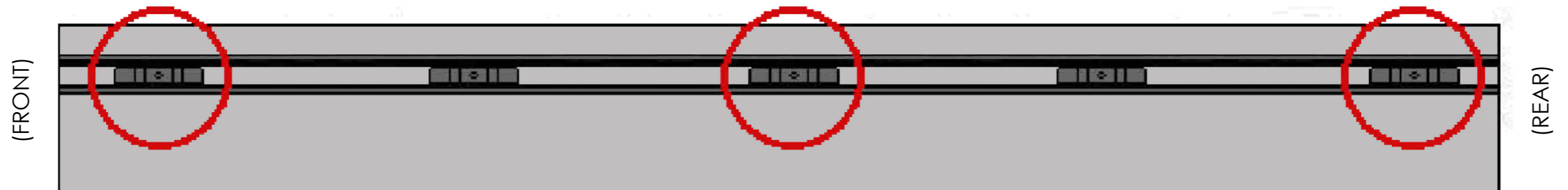
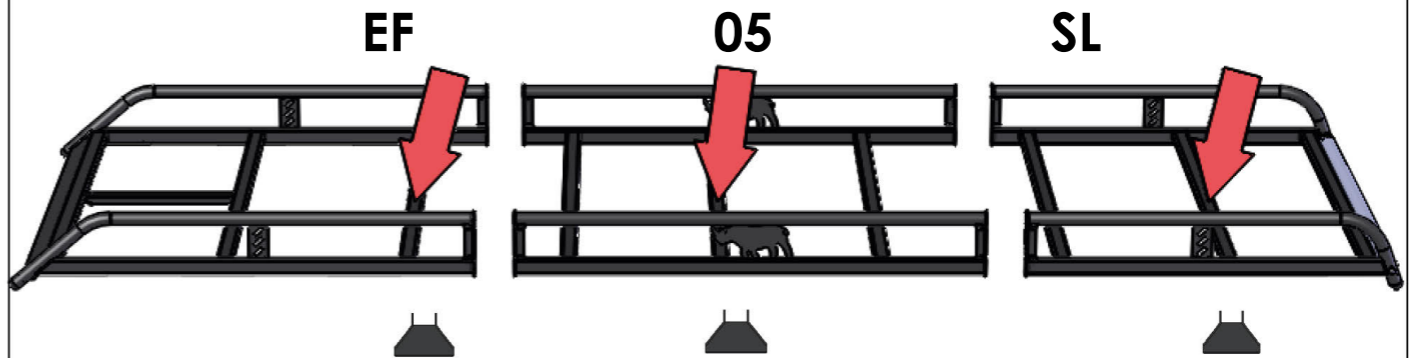
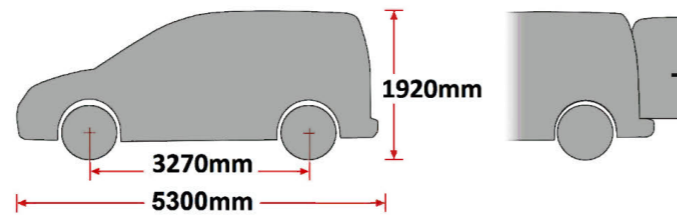
JUMPY/DISPATCH/EXPERT/PROACE  
2016-  
L2, H1, TWIN DOORS

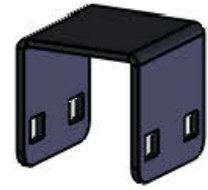


# EU/R 663



JUMPY/DISPATCH/EXPERT/PROACE  
2016-  
L3, H1, TWIN DOOR

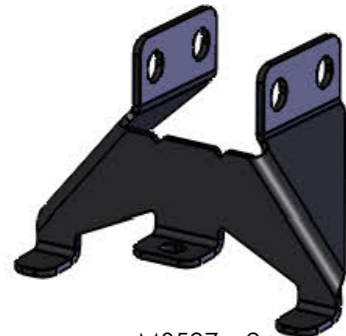




MS161 x 6



MS506 x 4



MS507 x 2

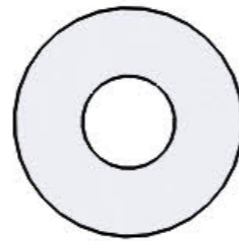


PS030 x 6

(1:1)



FB003 (M8 x 65) x 12



FW002 (M8) x 40



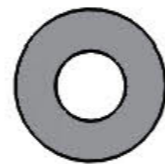
FN006 (M8) x 20



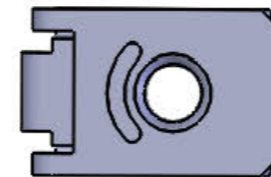
FS041 (M6 x 16) x 6



FW008 (M6) x 6



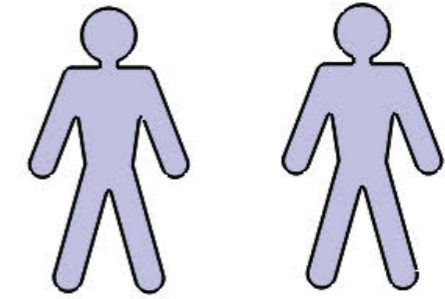
FW001 (M6) x 6



FN020 (M6) x 6



FS015 (M8 X 25) x 8



13mm x 2



10mm x 1

