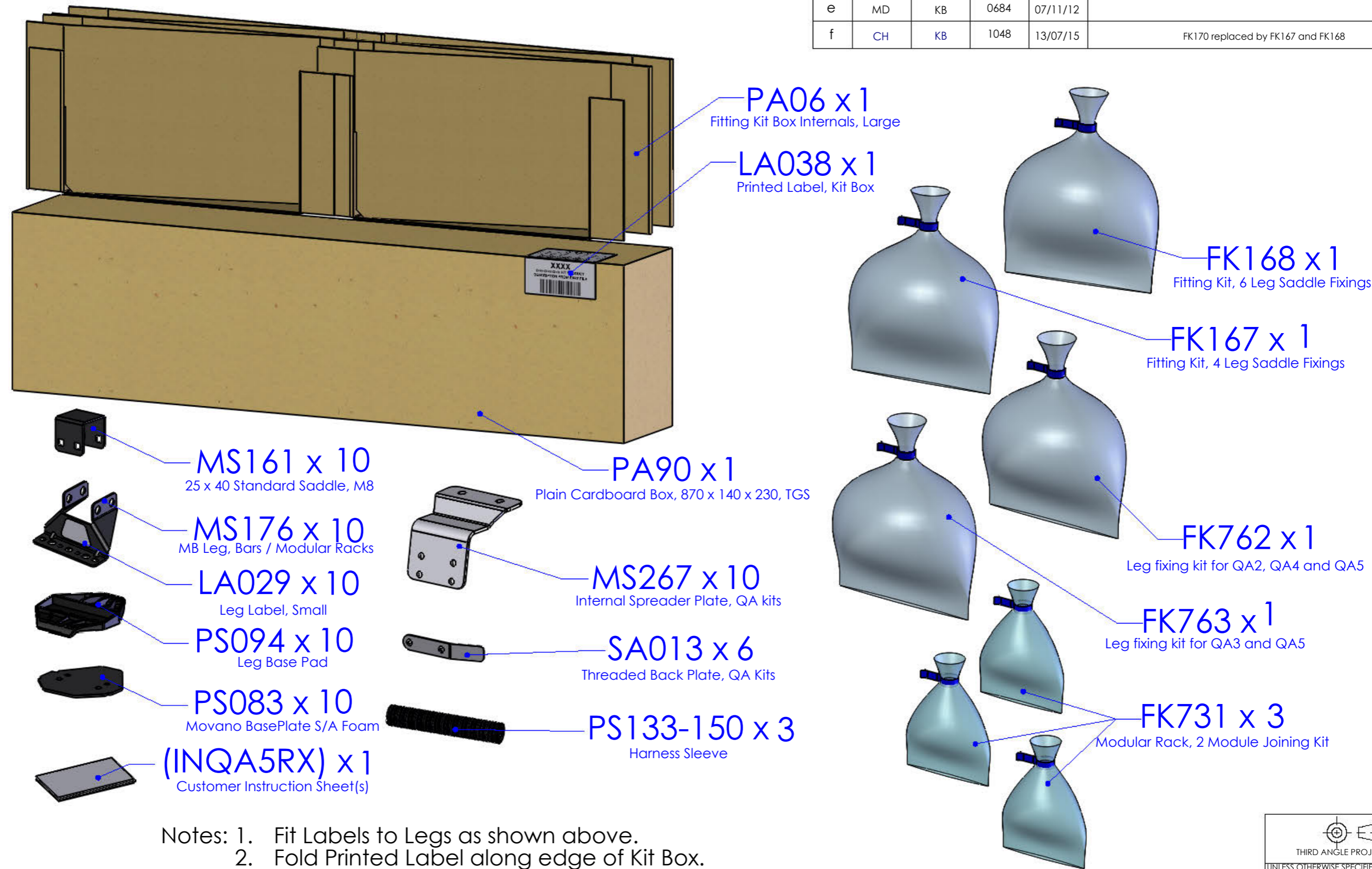


| ISSUE: | DRAWN BY: | CHECKED BY: | CRF NO: | DATE:    | DESCRIPTION:                      |
|--------|-----------|-------------|---------|----------|-----------------------------------|
| C      | MD        | DS          | 0634    | 30/04/12 |                                   |
| d      | DS        | KB          | 0659    | 11/07/12 |                                   |
| e      | MD        | KB          | 0684    | 07/11/12 |                                   |
| f      | CH        | KB          | 1048    | 13/07/15 | FK170 replaced by FK167 and FK168 |


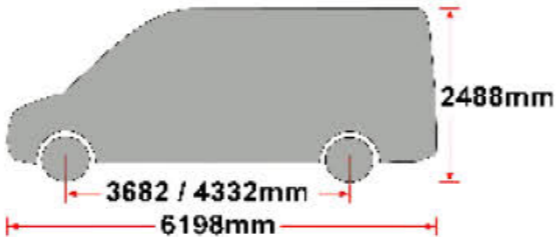
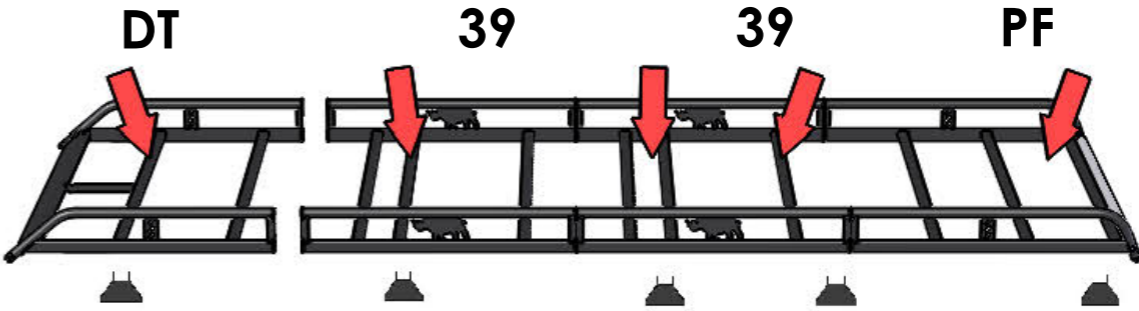


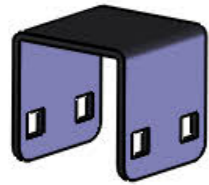
- Notes: 1. Fit Labels to Legs as shown above.  
2. Fold Printed Label along edge of Kit Box.  
3. Put through heat tunnel.

|  |  |                         |
|--|--|-------------------------|
| DRAWING NO:  | DESCRIPTION:                           | DESIGNED BY:            |
| QA5RX (1 of 7)   | "QA" 10 Leg Fitting Kit, Modular Racks | D Spendlove<br>07/02/11 |
| MATERIAL SIZE:   | MATERIAL SPEC:                         | WEIGHT:                 |
| n/a  | n/a                                    | 13.90Kg                 |
| © NOTE: This drawing is the property of Rhino Products Ltd and must not be used or copied without written consent. The Rhino Products name and logo must remain clearly visible in any reproduction. |  |                         |

|   |                  |
|---|------------------|
| THIRD ANGLE PROJECTION                              |                  |
| UNLESS OTHERWISE SPECIFIED:<br>DIMENSIONS ARE IN MM |                  |
| 0.00  | 0.2              |
| 0.0   | 0.5              |
| ANG   | 0.5°             |
| DERIVED DIMENSIONS SHOWN IN BRACKETS                |                  |
| DEBURR AND BREAK<br>ALL SHARP EDGES                 |                  |
| SHEET SIZE A3                                       | SHEET SCALE: 1:5 |



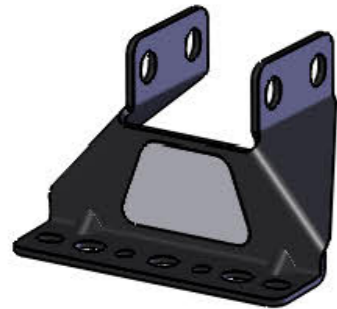
|   |   |  |
|---|---|--|
| <div data-bbox="335 304 706 388"><b>EU/R 606</b></div> <div data-bbox="186 464 798 569"></div> | <div data-bbox="866 249 1454 333"><b>MASTER/MOVANO /NV400 2010-L3 H2</b></div> <div data-bbox="908 348 1427 569"></div> | <div data-bbox="1584 237 2647 527"></div> |
|   |   |  |
|   |   |  |
|   |   |  |



MS161 x 10



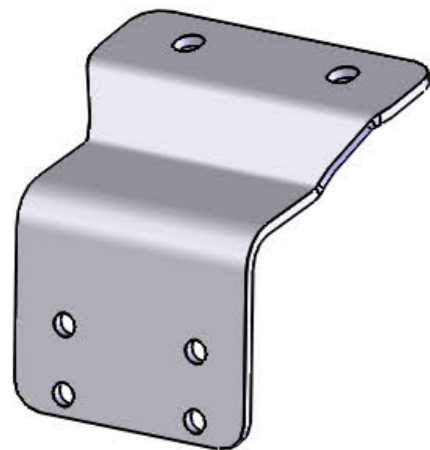
PS094 x 10



MS176 x 10



PS083 x 10



MS267 x 10



(SA013) x 6



PS133-150 x 3



PS082 x 10

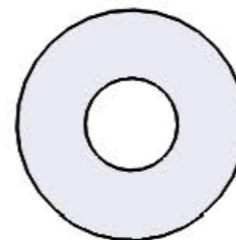


PS064 x 2

(1:1)



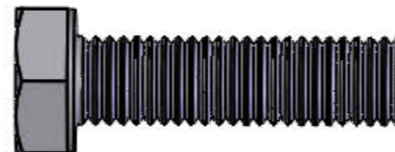
FB003 (M8 X 65) x 20



FW002 (M8) x 84



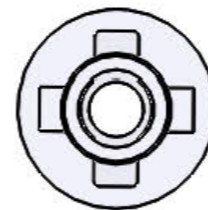
FN006 (M8) x 52



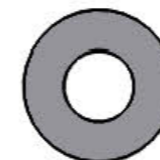
FB006 (M8 X 30) x 20



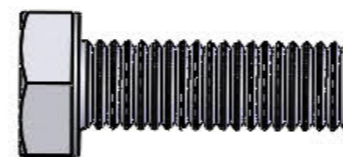
FS001 (M6 x 20) x 20



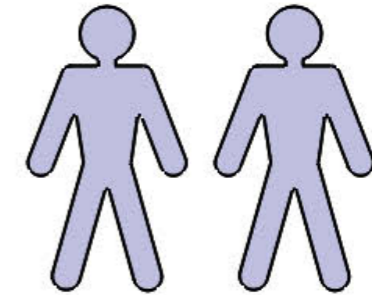
FN003 (M6) x 20



FW001 (M6) x 20



FS015 (M8 X 25) x 12



13mm x 2



10mm x 1

